



SONICS®

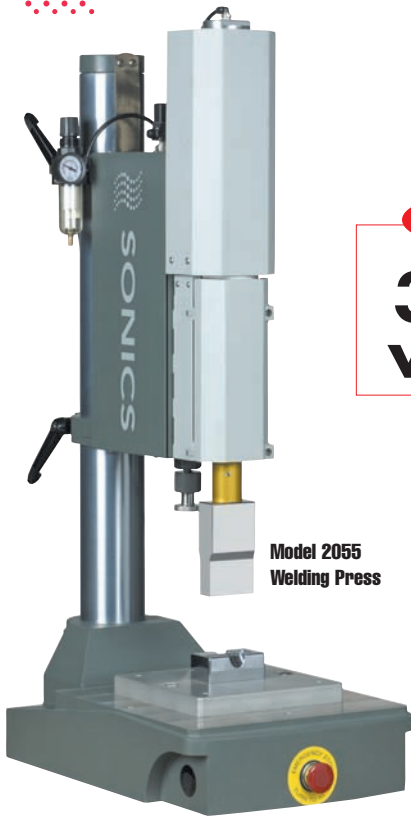
Sonics & Materials, Inc.

20 kHz Model 2055

Ultrasonic Plastics Welding System

new
**3500
watts**

more Power Features



Model 2055
Welding Press



GX-Series Power Supply

new Power	Now available in: ■ 3500 watts
new Features	<ul style="list-style-type: none"> • Automatic Frequency Tuning • Digital Amplitude Control • Ultrasonic Horn/Stack Frequency Display • Good Part/Bad Part Output Signal • Digital Soft Start Amplitude Ramp Control • Line Voltage Phase Angle Regulation
new Models	<p>Weld by: digital time - Model GXT digital time and/or constant energy - Model GXE digital time, constant energy and/or distance - Model GXL*</p> <p><i>*Available with Model 2050 press only</i></p>

STANDARD FEATURES INCLUDE:

- Multiple Job Storage
- Digital Force Triggering
- Calibration Pulse Prior to Every Weld Cycle
- Back-Lit LCD Display
- Ultrasonics Load Meter Scale
- Upper and Lower Weld Limit Settings
- RS232 Serial Port Printer Output
- Optional PLC I/O (Input/Output) Ports
- Soft Start Overload Protection Circuitry
- Load Regulation Circuitry
- Distance Mode Settings in English or Metric Units (with Model 2050 press only)

Leaders in the field of ultrasonic plastics welding equipment and technology since 1969, Sonics & Materials offers its new line of **GX-Series** ultrasonic power supplies, combined with 20 kHz welders, for welding medium to large-sized parts at higher amplitudes.

The new GX-Series, available in 3500 watts, provides microprocessor control and consistent reliability for every application. Power supplies feature smart-logic, user-friendly keypad navigation and line voltage phase angle regulation which allows for single phase power requirement and promotes conservation of on-demand electrical energy.

Power Supply

Dimensions: 17.75" W x 11.00" H x 22.50" D
(450.8 x 279.4 x 571.5 mm)

Weight: 70 lbs. (31.8 kg)

Corporate Headquarters

53 Church Hill Road
Newtown, CT 06470 USA
203.270.4600
800.745.1105
203.270.4610 fax
info@sonics.com
www.sonics.com

European Office

13, Rue Pre-de-la-Fontaine
CH-1217 Meyrin/Satigny
Switzerland
(41) (0) 22/364 1520
(41) (0) 22/364 2161 fax
europe@sonicsandmaterials.ch
www.sonics.com



For more information: **1-800-745-1105 • www.sonics.com**

Model 2055 Features

- Single Piece Rigid Cast Aluminum Machine Base and Column Hub

- Increased Steel Column Diameter and Wall Thickness

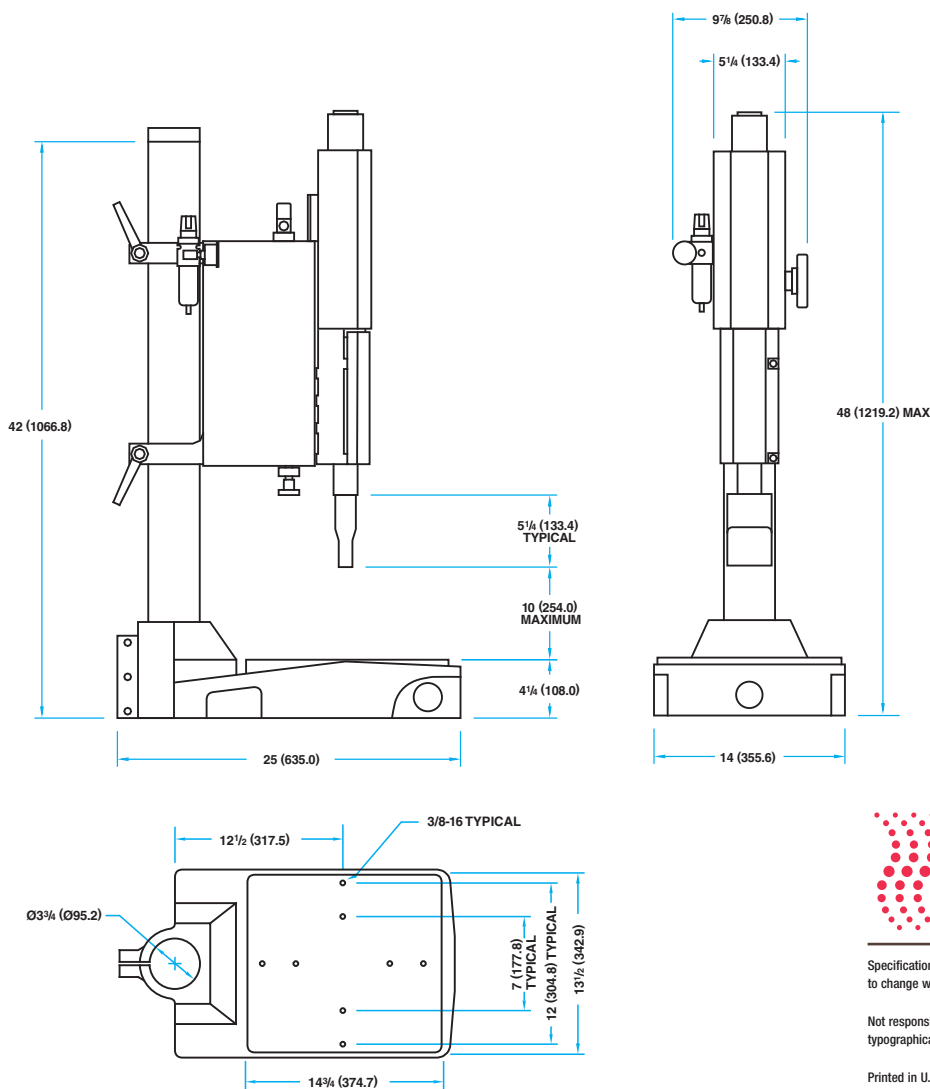


- Single Rail Linear Slide
- Direct In-Line Air Cylinder
- Extended Center Base to Column Throat Depth Distance
- Additional 12" Center-to-Center Lower Fixture Mount Holes

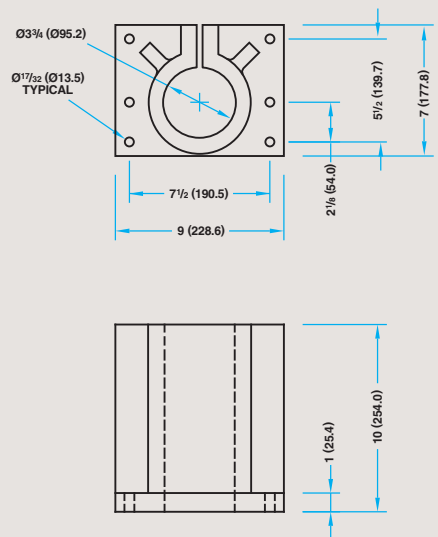
Specifications, Additional Features, and Options

Dual Cycle Start Buttons	Standard
Non-Contact Cycle Start Buttons	Optional
Front Emergency Stop	Standard
Speed & Pressure Pneumatic Controls	Standard
Head Adjust Counter Balance Spring	Standard
Adjustable Positive Stop	Standard
Automation Limit Switches	Optional
360° Snap-In Stack Assembly	Standard
Rigid Mount Booster	Optional
Stand Alone Column Hub	Optional
Extended Length Column	Optional
3.75" (95.3) Column Diameter	Standard
4" (101.6) Stroke Air Cylinder	Standard
6" (152.4) Stroke Air Cylinder	Optional
Air Cylinder Bore Diameter	2.5" (63.5)
Clamping Force at 90 PSIG	441 lbs. (1961n)
Input Voltage	220 VAC
Weight	165 lbs. / 74.8 kg

Dimensional Data All Dimensions: Inches (mm)



Optional Stand-Alone Hub



SONICS®

© 2008 Sonics & Materials, Inc.

Specifications subject to change without notice.

Not responsible for typographical errors.

Printed in U.S.A.
1C/03/08

Registered by UL to ISO 9001



Sonics & Materials, Inc.