



# SONICS®

Sonics & Materials, Inc.



Model 2055 Press

**new**

**Model 2055**

## 20 kHz Ultrasonic Plastics Welding Systems

**more Power Features**



GX-Series Power Supply

<b>new Power</b>	Now available in: 1200 watts ■ 1700 watts ■ 2200 watts
<b>new Features</b>	<ul style="list-style-type: none"> <li>• Digital Amplitude Control</li> <li>• Ultrasonic Horn/Stack Frequency Display</li> <li>• Good Part/Bad Part Output Signal</li> <li>• 30% smaller power supply footprint</li> </ul>
<b>new Models</b>	<p><b>Weld by:</b> digital time - <b>Model GXT</b>  digital time and/or constant energy - <b>Model GXE</b>  digital time, constant energy and/or distance - <b>Model GXL*</b></p> <p><small>* Available with Model 2050 press only.</small></p>

### STANDARD FEATURES INCLUDE:

- Automatic Frequency Tuning
- Multiple Job Storage
- Digital Force Triggering
- Calibration Pulse Prior to Every Weld Cycle
- Back-Lit LCD Display
- Ultrasonics Load Meter Scale
- Upper and Lower Weld Limit Settings
- RS232 Serial Port Printer Output
- Optional PLC I/O (Input/Output) Ports
- Soft Start Overload Protection Circuitry
- Load Regulation Circuitry
- Distance Mode Settings in English or Metric Units (Model 2050 press only)

Leaders in the field of ultrasonic plastics welding equipment and technology since 1969, Sonics & Materials offers its new line of **GX-Series** ultrasonic power supplies, combined with the super-rigid Model 2055 press, to create a powerful new 20 kHz system designed to handle even the most demanding applications.

The new GX-Series provides microprocessor control and consistent reliability for every application, and delivers more output power to the Model 2055 press, easily handling significantly larger part size and force requirements. Power supplies feature smart-logic, user-friendly navigation and are available in three different welding mode configurations for maximum versatility and flexibility.

### Power Supply

Dimensions: 15.25" W x 6.50" H x 18.75" D  
(387.3 x 165.1 x 476.25 mm)  
Weight: 21 lbs. (9.5 kg)

**Corporate Headquarters**  
53 Church Hill Road  
Newtown, CT 06470 USA  
203.270.4600  
800.745.1105  
203.270.4610 fax  
info@sonics.com  
www.sonics.com

**European Office**  
13, Rue Pre-de-la-Fontaine  
CH-1217 Meyrin/Satigny  
Switzerland  
(41) (0) 22/364 1520  
(41) (0) 22/364 2161 fax  
europe@sonicsandmaterials.ch  
www.sonics.com



For more information: **1-800-745-1105 • www.sonics.com**

## Model 2055 Features

- Single Piece Rigid Cast Aluminum Machine Base and Column Hub
- Increased Steel Column Diameter and Wall Thickness

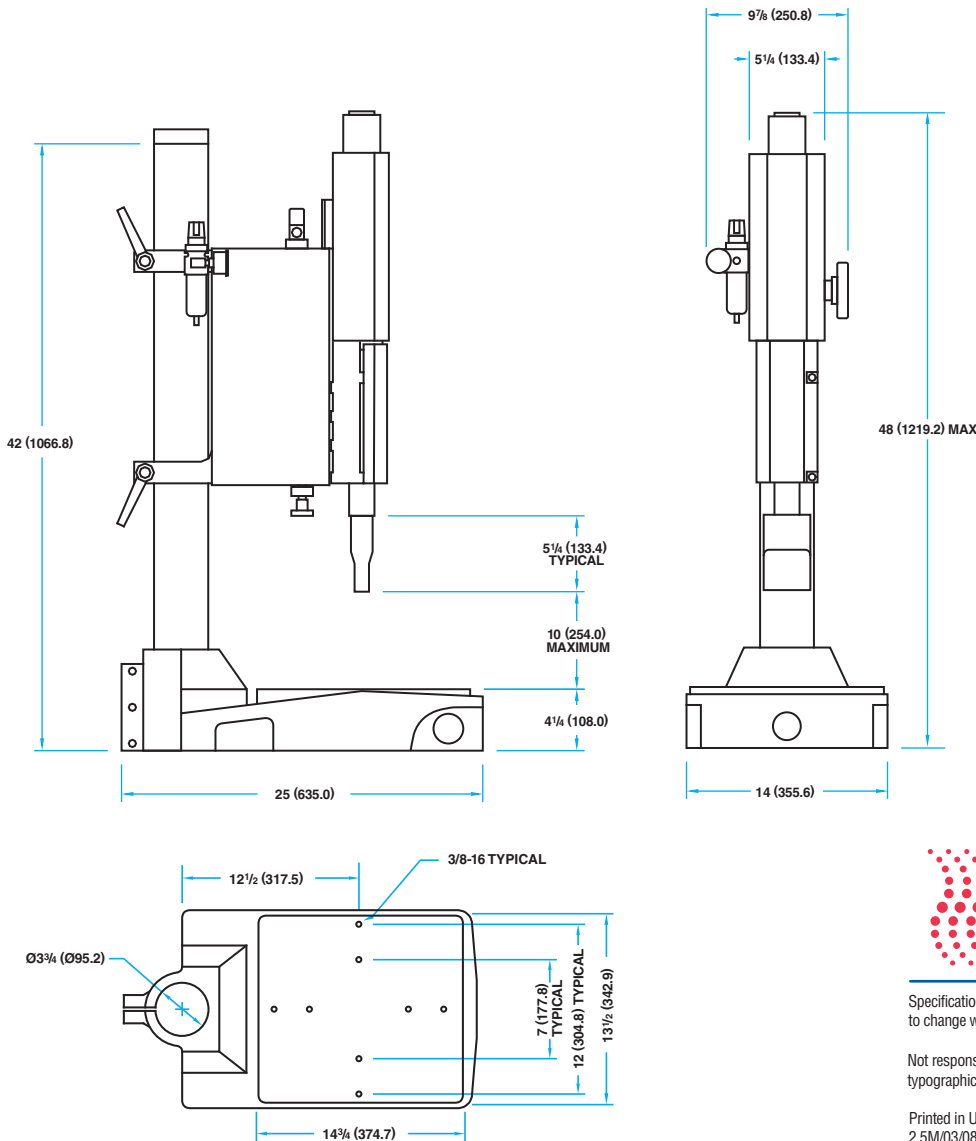


- Single Rail Linear Slide
- Direct In-Line Air Cylinder
- Extended Center Base to Column Throat Depth Distance
- Additional 12" Center-to-Center Lower Fixture Mount Holes

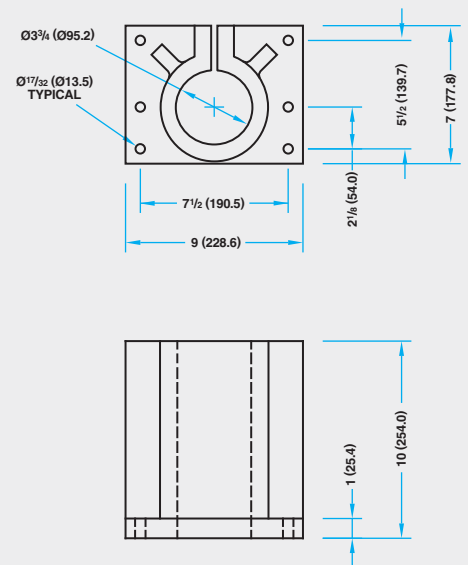
## Specifications, Additional Features, and Options

Dual Cycle Start Buttons	Standard
Non-Contact Cycle Start Buttons	Optional
Front Emergency Stop	Standard
Speed & Pressure Pneumatic Controls	Standard
Head Adjust Counter Balance Spring	Standard
Adjustable Positive Stop	Standard
Automation Limit Switches	Optional
360° Snap-In Stack Assembly	Standard
Rigid Mount Booster	Optional
Stand Alone Column Hub	Optional
Extended Length Column	Optional
3.75" (95.3) Column Diameter	Standard
4" (101.6) Stroke Air Cylinder	Standard
6" (152.4) Stroke Air Cylinder	Optional
Air Cylinder Bore Diameter	2.5" (63.5)
Clamping Force at 90 PSIG	441 lbs. (1961n)
Input Voltage	220 VAC
Weight	165 lbs. / 74.8 kg

## Dimensional Data All Dimensions: Inches (mm)



## Optional Stand-Alone Hub



# SONICS

© 2008 Sonics & Materials, Inc.

Specifications subject to change without notice.

Registered by UL to ISO 9001

Not responsible for typographical errors.



Printed in U.S.A.  
2.5M/03/08

A3787 Sonics & Materials, Inc.